

UWELL

Manufactured by SHENZHEN UWELL TECHNOLOGY CO., LTD.

©2021 By SHENZHEN UWELL TECHNOLOGY CO., LTD., All Rights Reserved.
Designed by UWELL Made in China

www.myuwell.com



Uwelltech



Uwelltech



Uwelltech



Uwelltech

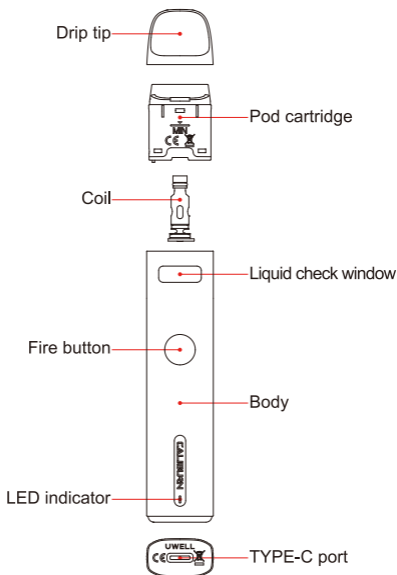


Uwell

CALIBURN

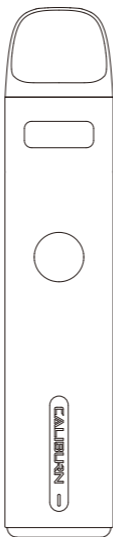
CALIBURN G2 Pod System
User Manual

Illustration



Quick User's Guide

1. Push to remove the drip tip while the pod cartridge is securely inserted in the body.
2. Fill e-liquid through the e-liquid filling port, cap the cartridge, sit for 10 minutes.
3. Press fire button 5 times to turn on, draw or press the button to vape.



Progressive airflow control



Top-fill open system



Vibration feedback



Pro-FOCS technology

Specification

- Material: PA, Aluminium Alloy
- Size: 110.5 mm*22.5 mm*13 mm
- Net Weight: 36 g
- E-Liquid Capacity: 2 ml
- Output Power: 18 W
- Coil Specification:
FeCrAl UN2 Meshed-H 1.2 Ω CALIBURN G2 coil
- Cell Capacity: 750 mAh

The Packaging Includes

- 1 \times CALIBURN G2 Pod System
- 1 \times UN2 Meshed-H 1.2 Ω CALIBURN G2 coil
(pre-installed)
- 1 \times UN2 Meshed-H 0.8 Ω CALIBURN G coil (spare)
- 1 \times User Manual
- 1 \times Type-C Charging Cable

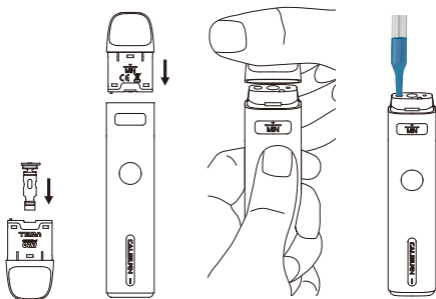
Features

1. Vibration alert.
2. Vape with button or drawing.
3. Safe guarded by button, quick press 5 times to turn on/off.
4. Cost-effective refillable and replaceable cartridge.
5. Convenient top-filling.
6. An unparalleled vape experience is brought by proprietary PRO-FOCS flavor testing technology from UWELL.
7. Stable, safe and reliable performance is ensured by built-in chipset functions.
8. Comfortable grip with concise and fashionable appearance.
9. Air inlet preference will be satisfied with progressive airflow control.

Instructions

1. How to fill the pod

- Push the coil firmly to the bottom, aligning the locating slot in the cartridge.
- Place the cartridge in the device.
- Remove the drip tip.
- Fill with e-liquid.
- Cap on with drip tip.



Attention

- When installing a coil, please make sure the coil aligns with the locating slot in the cartridge.
- When filling e-liquid, please fill through the filling port. Do not fill the e-liquid through the airway in the middle.
- Do not leave the cartridge uncapped open. Cap drip tip on securely right after filling to prevent e-liquid leak.
- After the first e-liquid filling, please let it sit for 10 minutes to avoid coil burning.
- Please refill e-liquid when the e-liquid reaches the "MIN" level.

2. Turn on/off

Press 5 times fire button within 2 seconds to turn on/off the device, the green led will flash 3 times at the same time.

3. Vape

When the device is on, vape by drawing or pressing button. LED indicator remains on while working. The device will automatically stop working when continuously working longer than 8 seconds.

4. Replacing cartridge

- a. Remove the used pod cartridge from the device. Install a new cartridge.
- b. After filling the new pod cartridge, please let the pod sit for 10 minutes to avoid coil burning.
- c. The device will vibrate once when the cartridge (with coil) is inserted and connected.

5. Power indication function

During vaping, green light means battery life is more than 60%, blue light means battery life is between 30%~60%, and the red light means battery life is less than 30%. When the red light flashes 10 times in a row, the power is too low, and the pod system will automatically shut down.

6. Short-circuit protection

When the device is short-circuited, if vaping is attempted, the LED indicator will flash in red 3 times and vibrate 4 times to signal no output.

7. Low voltage protection

When the device is in low battery, the LED indicator will flash in red 10 times, and the device will vibrate 3 times and stop output.

8. Overtime protection

If vaping lasts over 8 seconds, the LED indicator will flash in green 5 times, the device will vibrate 2 times and automatically stop output.

9. Open circuit prompt

When the cartridge is removed from the device, the LED will flash in blue 3 times and the device will vibrate 2 times to signal it.

10. Charging

The device will vibrate 2 times when the charging cable is connected. The LED indicator will stay on while being charged, it will flash in colors to indicate current battery level: red means low, blue means medium, green means adequate. Once the charge is completed, the device vibrates once to signal the completion and the LED indicator stays on in green. It also vibrates once when the charging cable is disconnected.

Attention

1. Please charge with certified high-quality adaptor from a reputable company and a Type-C cable with the charging current of 5V/2A.
2. The device and adaptor may warm up when charging, keep away from flammable and explosive goods.
3. Please use a dry and soft cloth to clean the device. Keep away from water or any liquids.
4. Please remove the pod cartridge and store it separately when you are on a plane to avoid leakage due to pressure changes.
5. Please do not put the device in your pocket with other hard objects to avoid damages.

6. Please turn off the device when it is not in use.
7. Please charge the device at least once a month.
8. Don't disassemble the device.
9. Avoid high temperature, low temperature and humidity during use or storage to avoid damage to the equipment.
10. The product parameters or pictures in this manual are for illustration purpose only, please refer to the actual product.

Safety Instruction

Please read the following safety instructions carefully before using the product.

1. This product is only available to people who have reached the legal age of smoking. It is strictly forbidden for young children, pregnant women and women during breastfeeding or for patients with heart disease, high blood pressure, diabetes, depression and asthma.
2. Please put the product out of reach of children and pets to avoid injury.
3. When using this product, please keep away from inflammable and explosive materials to avoid injury.
4. The company does not assume any responsibility for any equipment damage or personal injury caused by user misuse.

Warranty Details

Please keep the anti-counterfeit code and proof of purchase after purchasing the product. The warranty period is 180 days from the date of purchase. Our company provides warranty service (Device and atomizer only, exclude coil head and pod cartridge).

Please note that any of the following conditions are not covered by the warranty:

1. Exceeding the warranty period.
2. Damage caused by the use, maintenance, and storage that is not in accordance with the requirements as instructed.
3. Damage caused by unauthorized repair.
4. Damage caused by the usage of non-UWELL components.
5. Damage caused by force majeure.

Verification

1. Visit the UWELL official website www.myuwell.com through a smartphone or PC.
2. Please enter the 16 digits authentic code, and the result will be displayed in a few seconds.
3. Please feel free to contact UWELL via e-mail, phone or website for more help.

Customer Service

We pride ourselves in manufacturing quality products and providing excellent customer service. For any issues, please contact us at service@myuwell.com.

* UWELL reserves the right of final interpretation of the user manual.

* It is hereby stated that the markable area on the product is not enough to mark the CE and WEEE as the standard dimensions.