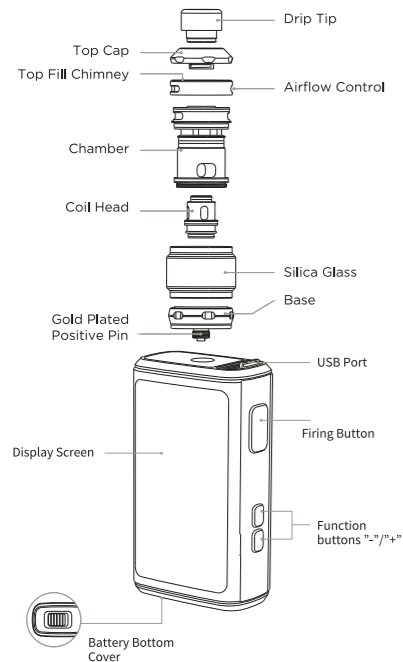


## Thank you for choosing GEEKVAPE

- \* For better user experience, please read the user manual before starting your vape journey.
- \* Please keep the user manual for future reference.

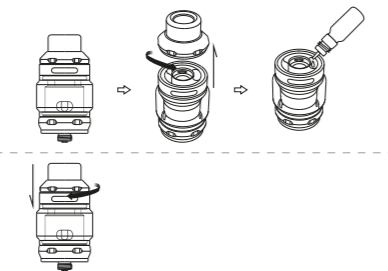
### OVERVIEW



01 English

1

### FILLING THE E-LIQUID

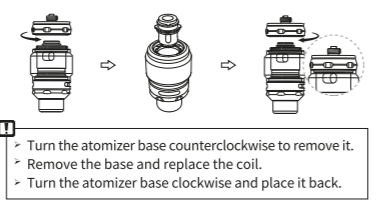


1. Get the product.
2. Turn the atomizer cap counter clock wise to lift it, opening the atomizer.
3. Fill the tank with e-liquid through the fill port hole. (Do not overfill the tank to avoid any leakage.)
4. Place back the top cap as shown in picture. (After filling, wait 5 minutes before using the device.)

English 02

2

### REPLACE THE COIL



1. Turn the atomizer base counterclockwise to remove it.
2. Remove the base and replace the coil.
3. Turn the atomizer base clockwise and place it back.

### PRODUCT PARAMETERS

- **Output Mode:** POWER · SMART · TC-SS · TC-TCR · BYPASS
- **Output Power:** 5W-200W adjust 1W each time
- **Output Current:** 45A (typical value)
- **Output Voltage:** 12.0V (typical value)
- **Charging Port:** MicroUSB Port
- **Resistance Range of Cartridge:** 0.1Ω- 3.0Ω
- **Battery Specification:** external dual 18650 battery
- **Display Screen:** 2.4" TFT color screen
- **Operating Temperature:** 0 C ~ 45 C
- **Storage Temperature:** -20 C ~ 60 C
- **Relative Humidity:** 45%RH ~ 75%RH
- **Cooling Mode:** Natural cooling

### INSTRUCTIONS

1. **Power On/Off:** Press the Fire button 5 times in 2s to turn on or turn off the device.
2. **Power Adjustment:** In POWER mode, click "+" or "-" button to adjust power. Long press the button will enter the quick adjustment mode.
3. **Temperature Adjustment:** In TC-SS and TC-TCR operating mode, click "+" or "-" button to adjust power. Long press the button to enter the quick adjustment mode.
4. **SMART Mode:** The device will match the best output power range according to the resistance of the coil, and users can adjust the output power within the best power range by pressing the function buttons.
  - If the coil resistance is 0.15 ohm or 0.2 ohm, the recommended power is 80W, and the power adjustment range is 70-90W.
  - If the coil resistance is 0.25 ohm, the recommended power is 52W, and the power adjustment range is 45-57W.
  - If the coil resistance is 0.4 ohm, the recommended power is 55W, and the power adjustment range is 50-60W.
5. **Enter The Setting State:** Press the Fire button three times in 2s to enter the setting state.
6. **Exit The Setting State:** Long press the Fire button for 0.8s to confirm the change and exit the setting state (the setting state automatically exits after 5s of no operation).

03 English

3

### 7. Switch Working Mode:

- Press the Fire button three times in 2s to enter the setting state.
- Cursor in the upper left corner of the working mode, press the "+" or "-" button.
- The available working modes are POWER, SMART, TC-SS, TC-TCR, and BYPASS.

### 8. Clear/Restore The Puff Count:

- Press the Fire button three times in 2s to enter the setting state.
- Press the Fire key to switch the cursor and stay in the Puff column.

- Press "+" or "-" button to clear the current value.
- Press "+" or "-" button again to restore the current value.

9. **Software Lock:** In the interface, press and hold the "+" & "-" buttons at the same time within 2S to lock these 2 buttons, repeat the action will unlock them. When "+" & "-" buttons are locked, press the fire button 3 times within 2 seconds, the whole device will be locked. Under this state, press the fire button 3 times within 2 seconds to unlock the whole device, but the "+" & "-" buttons will remain locked state.

### 10. Prompts And Protection:

- Battery anti-reverse connection protection.
  - Atomizer resistance  $\leq 0.07\Omega$  ohm output short-circuit prompt 2 seconds.
  - Atomizer resistance  $\geq 3.5\Omega$  ohm High resistance prompt 2 seconds.
  - Battery voltage  $< 3.2V$  before output or  $< 2.8V$  during output stops output. Low voltage prompts for 2 seconds.
  - If the temperature of the mainboard is  $> 65^\circ C$  before output or  $> 85^\circ C$  during output, the device overheating prompts for 2 seconds.
  - If the atomizer is not connected, press the Fire button and no atomizer prompt will be given for 2 seconds.
  - If you draw for more than 10 seconds, the output will stop. The timeout prompt will be 2 seconds.
  - In the locked state, press the "+" and "-" buttons to adjust parameters and press the lock screen for 2 seconds.
11. **Resistance Value Locking:** Press "-" button to lock or unlock the heating wire resistance when adjusting the cursor to the heating wire resistance option in setting mode. Press "+" button to update the resistance value and unlock it.

### 12. Atomizer Identification:

- In the standby state, it will monitor whether the atomizer is replaced and updated with the latest atomizer resistance value.
- When inserting a new atomizer, the screen jumps to the new and old atomizer selection interface, prompting the user to choose the new and old atomizer.

English 04

4

- Click "Show New Resistance Position" to select the new atomizer, and click "Show Old Resistance Position" to select the old atomizer.

- When removing the original atomizer, the resistance value of the atomizer will automatically be cleared.

### 13. Version Information Display / Company Profile:

- After you press the Fire button five times to turn off the device, press the "+" and "-" buttons for 2s at the same time. The current version information of the hardware will be displayed on the screen.
- Version information is displayed: Z200 KIT GV20220922V01 (20220922V01 is the update time and version of the software.)

14. **Factory Data Reset:** After the version information screen is displayed, press "Fire", "+", and "-" buttons at the same time to restore factory defaults, and the "CONFIG RESET" message will be displayed.

15. **BRIGHTNESS Adjustment:** In the standby screen, press the Fire button and "+" button at the same time for 1 second to display the brightness adjustment icon and increase screen brightness, while press the Fire button and "-" button can dim the screen brightness.

16. **Switch Display Theme:** In Settings mode, press "+" and "-" buttons for 1 second at the same time to switch to the next theme.

### ATTENTION

- \* This product is not intended for pregnant women and those who are under the age of 21.
- \* Keep away from fire or extreme heat.
- \* Avoid impact.

05 English

5

### CUSTOMER SERVICE

Main Page: www.geekvape.com  
Address: 7/F, No.3 West Block, Laobing Mansion,  
Xingye Road No.3012, Bao'an District,  
Shenzhen, Guangdong Province, China P.R.  
518102  
Phone: (001)866-985-6876  
Email: support@geekvape.com  
Available Time: 24/7

### ANTI-COUNTERFEITING CHECK

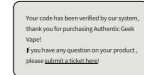
1. Go to www.geekvape.com and find PRODUCT VERIFICATION at the bottom of the main page.



2. Scratch the code bar under the label on the box and enter the 12-digit security number in the blank on the webpage.



3. Click "Go" and a pop-up window shall appear confirming if your product is authentically made.



English 06

6